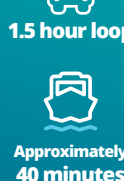


# Waiheke Island

## Fullers360

# Hop-On Hop-Off Explorer Bus



17 stops

1.5 hour loop

Multi day options

Approximately 40 minutes

## Walk the island



### 1 Oneroa Village to Matiatia Ferry Terminal

A scenic alternative from Oneroa Village to Matiatia Ferry Terminal. This track avoids the main road and takes you through the Atawhai Whenua Reserve. This track can be muddy after rain.

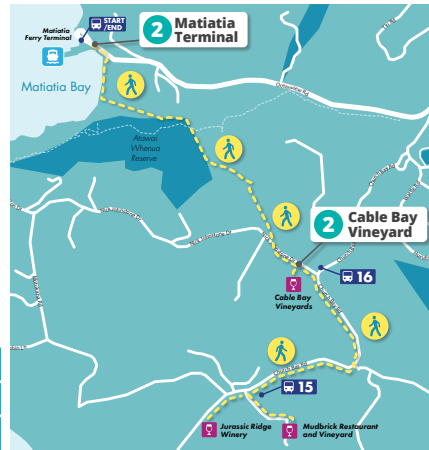
Walk time: 30 minutes (one way)	Distance: 2km	Grade: Easy
---------------------------------	---------------	-------------



### 2 Vineyards to Matiatia Ferry Terminal

Avoid the main road back to Matiatia Ferry Terminal with a scenic walk. The fastest and most direct route to the ferry terminal from Cable Bay, Mudbrick and Jurassic Ridge vineyards. This track can be muddy after rain.

Walk time: 30 minutes (one way)
Distance: 1.1km
Grade: Easy



### 3 Northern Hills and Oneroa Bay views

From art to coast - enjoy a loop walk to stunning Oneroa Bay. Beginning at the Waiheke Community Art Gallery, this walk will take you up to the northern hills for panoramic views of Oneroa Beach.

Walk time: 30 minutes (one way)	Distance: 2km	Grade: Easy
---------------------------------	---------------	-------------



### 4 Onetangi Beach to Casita Miro Vineyard

A must-do beach walk ending at an iconic Spanish inspired vineyard. Beginning at Charlie Farley's in Onetangi, this walk takes you along stunning beach and up the stairs from Seventh Avenue to Seaview Road.

Walk time: 25 minutes (one way)	Distance: 1.8km	Grade: Moderate/difficult
---------------------------------	-----------------	---------------------------



### 5 Cascades loop track - Whakanewha Regional Park

Walk 200 gradient steps, starting at the top of the park's central track opposite Batch Winery's car park on Carsons Road. A beautiful scenic bush walk with gentle birdsong and native fauna. This track can be muddy after rain.

Walk time: 40 minutes (loop)
Distance: 2.6km
Grade: Moderate/difficult



## Tickets and times

Scan this QR code to view timetable and pricing information on our website.



Save time and book online!  
Fullers.co.nz | 09 367 9111



## Hop-On Hop-Off Explorer Bus



This tour is the most flexible and cost-effective way to experience Waiheke Island's top spots. Simply hop on and hop off at the island's top spots including vineyards, beaches, seaside villages, galleries, shops and cafés.

## Tour details

- **Hop-On Hop-Off Explorer Bus:** Buses depart from Matiatia Ferry Terminal approximately every hour on Fridays and every 30 minutes on Saturdays and Sundays. The timetable has been designed to visit key locations with 17 convenient stops. If you prefer, stay on board and enjoy a scenic 1.5 hour tour across Waiheke with your friendly driver/guide talking you through the island's history and insider tips to help plan your trip.
- **Tourist hotspots:** Discover the best spots across the island for shopping and relaxing - including Oneroa Village and the stunning Onetangi Beach.
- **Duration:** We recommend allowing at least half a day, including ferry travel to and from downtown Auckland.
- **Departure time:** Each Hop-On Hop-Off Explorer Bus arrives at Matiatia Ferry Terminal to meet sailings as they arrive, the first bus meets the 9am sailing from downtown Auckland. The final bus will return passengers to the ferry terminal to meet the 7pm sailing back to downtown Auckland.

	Depart downtown Auckland			
	One day pass		Two day pass <sup>A</sup>	
	Tour and return ferry	Tour only	Tour and return ferry	Tour only
<b>Adult</b>	\$75	\$56	\$108	\$84.50
<b>Child*</b>	\$39	\$22	\$60	\$38
<b>Family**</b>	\$195	\$135	\$295	\$222

**Available Friday to Sunday** Ferry departs downtown Auckland every hour between 9am and 4pm.

**Note:** Double-decker and single level buses operate on this tour. Vineyards on the route may change without notice. A passport or valid NZ proof of identification is required to purchase or consume alcohol.

<sup>A</sup> Two day Hop-On Hop-Off Explorer Bus pass includes your return ferry ticket and one two-day Hop-On Hop-Off Explorer Bus which must be used over two consecutive days.

\***CHILD:** aged between 5 and 15 years old.

\*\***FAMILY:** two adults and two children.

Terms and conditions apply.

Some vineyards may close from time to time. In these instances, the Hop-On Hop-Off Explorer Bus will not stop at these destinations. Advanced bookings are advisable for all Fullers360 tours and bookable ferry sailings. We recommend arriving 30 minutes prior to ferry departure to check in. All departures and timetables are subject to change or cancellation. Prices in this brochure are correct at time of printing and inclusive of GST, and may change without notice. All travel on Fullers360 sailings and tours is subject to our full terms and conditions of travel, available online at fullers.co.nz.

We would like to thank our partner, Waiheke Walking Trust for their help with the walking information in this brochure.

# Hop-On Hop-Off Vineyard Explorer Bus

Want to tick multiple Waiheke wineries off your list? Look no further than The Hop-On Hop-Off Vineyard Explorer Bus which has all the flexibility of our Hop-On Hop-Off Explorer Bus with added wine tastings at three of the best vineyards on Waiheke. If you're travelling with children, book a regular Hop-On Hop-Off Explorer Bus ticket and you've got the perfect day out for the whole family.

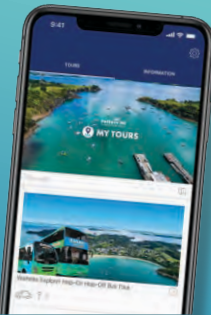
## Tour highlights

- ▶ Hop-On Hop-Off Vineyard Explorer Bus runs every Friday, Saturday and Sunday until 30 April 2023.
- ▶ Enjoy wine tastings at Cable Bay Vineyards, Batch Winery and Stonyridge Vineyard.
- ▶ Make the most of the 17 stops on the Hop-On Hop-Off Explorer Bus route, visit top vineyards, popular beaches and seaside villages.
- ▶ Sail back to Auckland on any same-day return ferry. We recommend allowing a full day, including ferry travel.
- ▶ **\$115 per person:** Includes return ferry tickets, Hop-On Hop-Off Explorer Bus pass and wine tastings at three vineyards.

## Your Hop-On Hop-Off Explorer Bus pocket guide



Download the Fullers360 My Tours app for insider tips, island history and must do attractions. Follow the live GPS map along the Hop-On Hop-Off Explorer Bus tour route and see the best of Waiheke.



Download the **FREE MyTours App**



## See and do on the tour

**Waiheke Community Art Gallery** 🚌 1

Enjoy a diverse range of exhibitions from local and acclaimed artists from around New Zealand or shop for souvenirs of eclectic hand-made mementoes.

▶ (09) 372 9907  
▶ waihekeartgallery.org.nz

Activity Views Open days

**The Local** 🚌 2, 15

Premium fish and chip restaurant overlooking stunning Oneroa beach.

▶ (09) 372 8752  
▶ thelocalwaiheke.co.nz

Food Wine tasting Views Open days Open nights

**Vino Vino Restaurant and Bar** 🚌 2, 15

One of Waiheke's oldest and most iconic restaurants with an Argentinian inspired menu.

▶ (09) 372 9888  
▶ vinovino.co.nz

Food Wine tasting Views Open days Open nights

**Goldie Estate** 🚌 3, 14

One of the first vineyards on Waiheke, now home to the University of Auckland's wine science centre.

▶ (09) 372 7493  
▶ goldieestate.co.nz

Wine tasting Views Open days

**Kennedy Point Vineyard** 🚌 3, 14

Certified organic wines nestled amongst 300-year-old pohutukawa trees.

▶ (09) 372 5600  
▶ kennedypointvineyard.com

Food Wine tasting Views Open days

**Ecozip Adventures** 🚌 5

Award winning adventure and eco-tourism destination. Dual flying-fox ziplines let you soar over vines side by side with a friend.

▶ (09) 372 5646  
▶ ecozipadventures.co.nz

Activity Views Open days

**Stonyridge Vineyard** 🚌 5, 6, 9, 10

Nestled in a valley of olive trees, reminiscent of France, Stonyridge is one of the more established vineyards on Waiheke well known for Bordeaux style wines.

▶ (09) 372 8822  
▶ stonyridge.com

Food Wine tasting Views Open days

**Te Motu Vineyard** 🚌 5, 6, 9, 10

Enjoy a tasting of Bordeaux-style wines at the breathtaking Te Motu. Nestled in the vines and overlooking the Onetangi Valley this is the perfect Waiheke vineyard to stop and take it all in.

▶ (09) 372 6884  
▶ temotu.co.nz

Food Wine tasting Views Open days Open nights

**Wild Estate/Waiheke Brewery** 🚌 5, 6, 9, 10

Sample boutique food and wine or craft beer at Waiheke's first micro-brewery served with a side of lawn games, clay bird shooting and archery.

▶ (09) 372 3434  
▶ wildonwaiheke.co.nz

Food Wine tasting Views Open days Open nights

**Tantalus Estate** 🚌 5, 6, 9, 10

Winner of the 2018/19 NZ best destination venue with award winning wines and an elegant restaurant.

▶ (09) 372 2625  
▶ tantalus.co.nz

Food Wine tasting Views Open days Open nights

**Museum of Waiheke** 🚌 6, 9

Experience a slice of old Waiheke Island and learn about the heritage and history located in Onetangi.

▶ (09) 372 2970  
▶ waihekemuseum.org.nz

Activity Open days

**The Heke** 🚌 7

The home of Waiheke Brewing Co's Heke Beer and the award-winning Waiheke Whisky, The Heke Kitchen serves tasty woodfired local fare. Bring the kids and enjoy the acres of beautiful gardens at this relaxed eatery.

▶ 09 372 0020  
▶ theheke.co.nz

Food Tastings Views Open days Open nights

**Onetangi Beach** 🚌 8

Stunning 1.87 km north facing beach with golden sands, great for fishing, walking and swimming or relax at restaurants along the water's edge.

Food Wine Views Open days Open nights

**Charlie Farley's** 🚌 8

A Waiheke institution since 1987, New Zealand's number one beach bar perfect for families.

▶ (09) 372 4106  
▶ chariefarleys.co.nz

Food Wine tasting Views Open days Open nights

**Three Seven Two** 🚌 8

Located in Onetangi beach with stunning sea views, cleverly named after the Waiheke phone prefix '372', with a delicate seasonal menu.

▶ (09) 372 8846  
▶ threeseventwo.co.nz

Food Wine tasting Views Open days Open nights

**Casita Miro Vineyard** 🚌 8

Charming Spanish-inspired food and wine with sweeping water views over Onetangi beach.

▶ (09) 372 7854  
▶ casitamiro.co.nz

Food Wine tasting Views Open days Open nights

**Obsidian Vineyard** 🚌 9

This little gem is nestled in Onetangi valley with a wonderful selection of award-winning wines.

▶ (09) 372 6100  
▶ obsidian.co.nz

Food Wine tasting Views Open days

**Batch Winery and Thomas's Bach** 🚌 11

As the highest Waiheke Island winery, it's not a surprise that Batch Winery is home to spectacular views and equally as beautiful wines. The perfect place to soak it all in and enjoy a wine tasting.

▶ (09) 372 3223  
▶ batchwinery.com

Food Wine tasting Views Open days Open nights

**Waiheke Wings** 🚌 11

Take in the best views of the island with scenic views at every turn.

▶ (09) 372 1122  
▶ waihekewings.co.nz

Activity Open days

**Allpress Olive Groves** 🚌 12

Enjoy a tasting experience, mill tour, or just pop in to pick up your favourite Extra Virgin Olive Oil made with hand-picked Waiheke olives. Choose from three world class brands: Allpress, Rangihoua Estate and number29.

▶ (09) 372 6214  
▶ www.allpressolivegroves.co.nz

Olive oils Views Open days

**Whakanewha Regional Park** 🚌 11, 12

On the southern coast of Waiheke Island this regional is perfect for sheltered swimming, campaign and picnics.

Activity Views Open days

**Mudbrick Vineyard and Restaurant** 🚌 16

This Tuscan-inspired vineyard is well renowned for its food, wine and beautiful gardens, a popular wedding destination.

▶ (09) 372 9050  
▶ mudbrick.co.nz

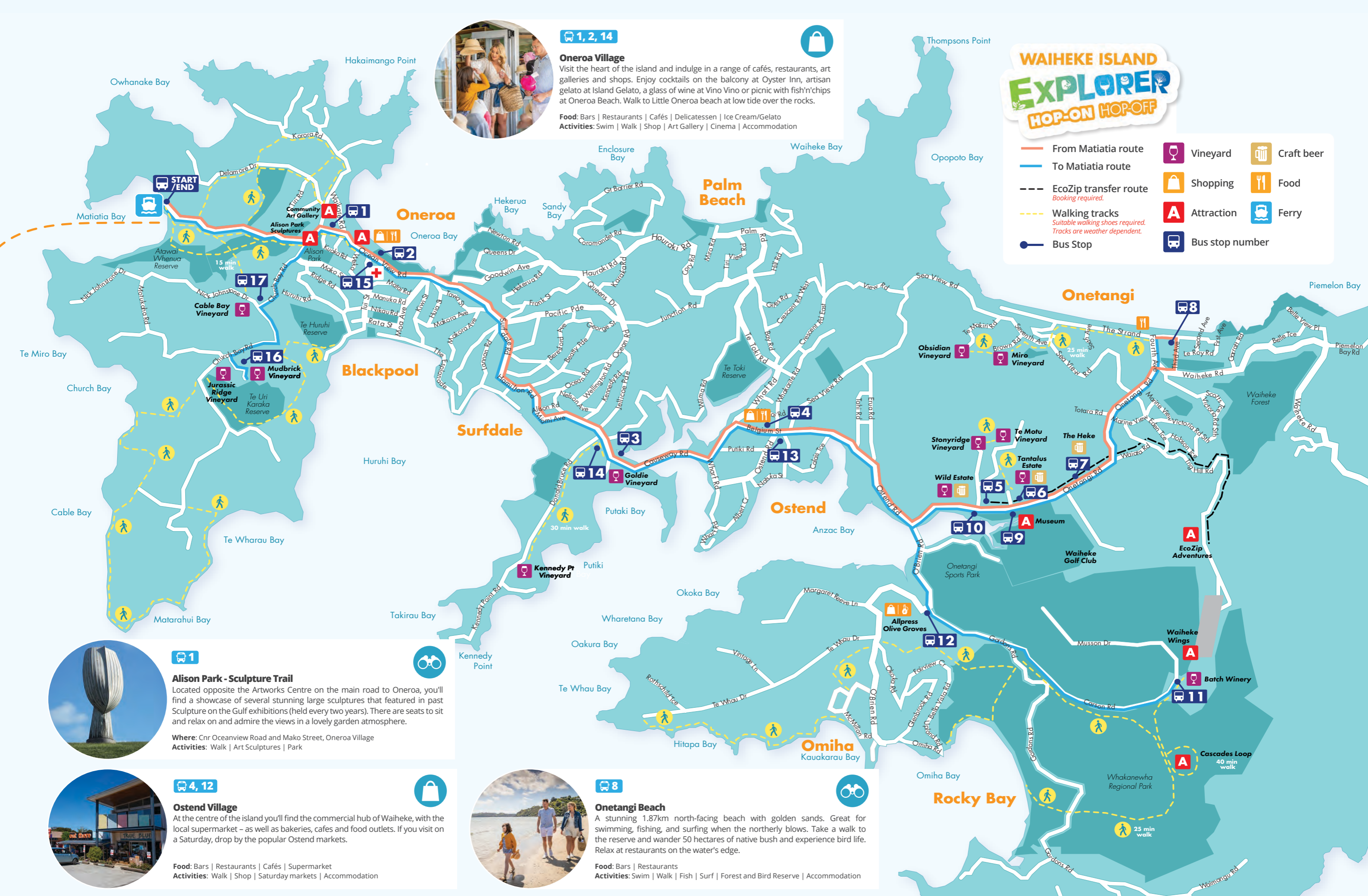
Food Wine tasting Views Open days Open nights

**Cable Bay Vineyards** 🚌 17

With panoramic views over the Hauraki Gulf you'll never want to leave Cable Bay Vineyards' modern verandah. Why not grab a sharing platter and make the most of the sun-soaked lawns.

▶ (09) 372 5889  
▶ cablebay.co.nz

Food Wine tasting Views Open days Open nights



1

**Alison Park - Sculpture Trail**

Located opposite the Artworks Centre on the main road to Oneroa, you'll find a showcase of several stunning large sculptures that featured in past Sculpture on the Gulf exhibitions (held every two years). There are seats to sit and relax on and admire the views in a lovely garden atmosphere.

**Where:** Cnr Oceanview Road and Mako Street, Oneroa Village  
**Activities:** Walk | Art Sculptures | Park



4, 12

**Ostend Village**

At the centre of the island you'll find the commercial hub of Waiheke, with the local supermarket – as well as bakeries, cafes and food outlets. If you visit on a Saturday, drop by the popular Ostend markets.

**Food:** Bars | Restaurants | Cafés | Supermarket  
**Activities:** Walk | Shop | Saturday markets | Accommodation



8

**Onetangi Beach**

A stunning 1.87km north-facing beach with golden sands. Great for swimming, fishing, and surfing when the northerly blows. Take a walk to the reserve and wander 50 hectares of native bush and experience bird life. Relax at restaurants on the water's edge.

**Food:** Bars | Restaurants  
**Activities:** Swim | Walk | Fish | Surf | Forest and Bird Reserve | Accommodation

**60 minute timetable** Bus departs Matiatia Ferry Terminal every 60 minutes.

	9:00am	10:00am	11:00am	12:00pm	1:00pm	2:00pm	3:00pm	4:00pm
Ferry departs downtown Auckland	9:00am	10:00am	11:00am	12:00pm	1:00pm	2:00pm	3:00pm	4:00pm
Ferry arrives at Matiatia	9:45am	10:40am	11:45am	12:40pm	1:45pm	2:40pm	3:45pm	4:40pm
Matiatia Ferry Terminal departure	10:00am	11:00am	12:00pm	1:00pm	2:00pm	3:00pm	4:00pm	5:00pm
<b>1</b> Waiheke Community Art Gallery	10:04am	11:04am	12:04pm	1:04pm	2:04pm	3:04pm	4:04pm	5:04pm
<b>2</b> Oneroa Village - Ocean View Road at Tui Street	10:07am	11:07am	12:07pm	1:07pm	2:07pm	3:07pm	4:07pm	5:07pm
<b>3</b> Goldie and Kennedy Point Vineyards	10:14am	11:14am	12:14pm	1:14pm	2:14pm	3:14pm	4:14pm	5:14pm
<b>4</b> Ostend shopping - 22 Belgium Street	10:18am	11:18am	12:18pm	1:18pm	2:18pm	3:18pm	4:18pm	5:18pm
<b>5</b> Stonyridge/Te Motu/Wild Estate	10:23am	11:23am	12:23pm	1:23pm	2:23pm	3:23pm	4:23pm	5:23pm
<b>6</b> Tantalus Vineyard/Waiheke Museum	10:24am	11:24am	12:24pm	1:24pm	2:24pm	3:24pm	4:24pm	5:24pm
<b>7</b> The Heke	10:25am	11:25am	12:25pm	1:25pm	2:25pm	3:25pm	4:25pm	5:25pm
<b>8</b> Onetangi Beach - 3rd Avenue, Charlie's, Three Seven Two	10:35am	11:35am	12:35pm	1:35pm	2:35pm	3:35pm	4:35pm	5:35pm
<b>9</b> Tantalus Vineyard/Waiheke Museum	10:39am	11:39am	12:39pm	1:39pm	2:39pm	3:39pm	4:39pm	5:39pm
<b>10</b> Stonyridge Vineyard	10:40am	11:41am	12:41pm	1:41pm	2:41pm	3:41pm	4:41pm	5:41pm
<b>11</b> Batch Winery/Waiheke Wings	10:54am	11:54am	12:54pm	1:54pm	2:54pm	3:54pm	4:54pm	5:54pm
<b>12</b> Allpress Olive Groves	10:57am	11:57am	12:57pm	1:57pm	2:57pm	3:57pm	4:57pm	5:57pm
<b>13</b> Ostend shopping - by RSA	11:03am	12:03pm	1:03pm	2:03pm	3:03pm	4:03pm	5:03pm	6:03pm
<b>14</b> Goldie and Kennedy Point Vineyards	11:07am	12:07pm	1:07pm	2:07pm	3:07pm	4:07pm	5:07pm	6:07pm
<b>15</b> Oneroa Village - Ocean View Road at Tui Street	11:12am	12:12pm	1:12pm	2:12pm	3:12pm	4:12pm	5:12pm	6:12pm
<b>16</b> Mudbrick Vineyard	11:20am	12:20pm	1:20pm	2:20pm	3:20pm	4:20pm	5:20pm	6:20pm
<b>17</b> Cable Bay Vineyard	11:25am	12:25pm	1:25pm	2:25pm	3:25pm	4:25pm	5:25pm	6:25pm
Matiatia Ferry Terminal arrival	11:30am	12:30pm	1:30pm	2:30pm	3:30pm	4:30pm	5:30pm	6:30pm
Ferry to Auckland departs	12:00pm	1:00pm	2:00pm	3:00pm	4:00pm	5:00pm	6:00pm	7:00pm

**30 minute timetable** Bus departs Matiatia Ferry Terminal every 30 minutes.

	9:00am	9:30am	10:00am	10:30am	11:00am	11:30am	12:00pm	12:30pm	1:00pm	1:30pm	2:00pm	2:30pm	3:00pm	3:30pm	4:00pm	4:30pm
Ferry departs downtown Auckland	9:00am	9:30am	10:00am	10:30am	11:00am	11:30am	12:00pm	12:30pm	1:00pm	1:30pm	2:00pm	2:30pm	3:00pm	3:30pm	4:00pm	4:30pm
Ferry arrives at Matiatia	9:45am	10:10am	10:40am	11:10am	11:45am	12:10pm	12:40pm	1:10pm	1:45pm	2:10pm	2:40pm	3:10pm	3:45pm	4:10pm	4:40pm	5:10pm
Matiatia Ferry Terminal departure	9:50am	10:20am	10:50am	11:20am	11:50am	12:20pm	12:50pm	1:20pm	1:50pm	2:20pm	2:50pm	3:20pm	3:50pm	4:20pm	4:50pm	5:20pm
<b>1</b> Waiheke Community Art Gallery	9:53am	10:23am	10:53am	11:23am	11:53am	12:23pm	12:53pm	1:23pm	1:53pm	2:23pm	2:53pm	3:23pm	3:53pm	4:23pm	4:53pm	5:23pm
<b>2</b> Oneroa Village - Ocean View Road at Tui Street	9:55am	10:25am	10:55am	11:25am	11:55am	12:25pm	12:55pm	1:25pm	1:55pm	2:25pm	2:55pm	3:25pm	3:55pm	4:25pm	4:55pm	5:25pm
<b>3</b> Goldie and Kennedy Point Vineyards	10:02am	10:32am	11:02am	11:32am	12:02pm	12:32pm	1:02pm	1:32pm	2:02pm	2:32pm	3:02pm	3:32pm	4:02pm	4:32pm	5:02pm	5:32pm
<b>4</b> Ostend shopping - 22 Belgium Street	10:05am	10:35am	11:05am	11:35am	12:05pm	12:35pm	1:05pm	1:35pm	2:05pm	2:35pm	3:05pm	3:35pm	4:05pm	4:35pm	5:05pm	5:35pm
<b>5</b> Stonyridge/Te Motu/Wild Estate	10:10am	10:40am	11:10am	11:40am	12:10pm	12:40pm	1:10pm	1:40pm	2:10pm	2:40pm	3:10pm	3:40pm	4:10pm	4:40pm	5:10pm	5:40pm
<b>6</b> Tantalus Vineyard/Waiheke Museum	10:11am	10:41am	11:11am	11:41am	12:11pm	12:41pm	1:11pm	1:41pm	2:11pm	2:41pm	3:11pm	3:41pm	4:11pm	4:41pm	5:11pm	5:41pm
<b>7</b> The Heke	10:12am	10:42am	11:12am	11:42am	12:12pm	12:42pm	1:12pm	1:42pm	2:12pm	2:42pm	3:12pm	3:42pm	4:12pm	4:42pm	5:12pm	5:42pm
<b>8</b> Onetangi Beach - 3rd Avenue, Charlie's, Three Seven Two	10:19am	10:49am	11:19am	11:49am	12:19pm	12:49pm	1:19pm	1:49pm	2:19pm	2:49pm	3:19pm	3:49pm	4:19pm	4:49pm	5:19pm	5:49pm
<b>9</b> Tantalus Vineyard/Waiheke Museum	10:23am	10:53am	11:23am	11:53am	12:23pm	12:53pm	1:23pm	1:53pm	2:23pm	2:53pm	3:23pm	3:53pm	4:23pm	4:53pm	5:23pm	5:53pm
<b>10</b> Stonyridge Vineyard	10:24am	10:54am	11:24am	11:54am	12:24pm	12:54pm	1:24pm	1:54pm	2:24pm	2:54pm	3:24pm	3:54pm	4:24pm	4:54pm	5:24pm	5:54pm
<b>11</b> Batch Winery/Waiheke Wings	10:34am	11:04am	11:34am	12:04pm	12:34pm	1:04pm	1:34pm	2:04pm	2:34pm	3:04pm	3:34pm	4:04pm	4:34pm	5:04pm	5:34pm	6:04pm
<b>12</b> Allpress Olive Groves	10:37am	11:07am	11:37am	12:07pm	12:37pm	1:07pm	1:37pm	2:07pm	2:37pm	3:07pm	3:37pm	4:07pm	4:37pm	5:07pm	5:37pm	6:07pm
<b>13</b> Ostend shopping - by RSA	10:43am	11:13am	11:43am	12:13pm	12:43pm	1:13pm	1:43pm	2:13pm	2:43pm	3:13pm	3:43pm	4:13pm	4:43pm	5:13pm	5:43pm	6:13pm
<b>14</b> Goldie and Kennedy Point Vineyards	10:47am	11:17am	11:47am	12:17pm	12:47pm	1:17pm	1:47pm	2:17pm	2:47pm	3:17pm	3:47pm	4:17pm	4:47pm	5:17pm	5:47pm	6:17pm
<b>15</b> Oneroa Village - Ocean View Road at Tui Street	10:52am	11:22am	11:52am	12:22pm	12:52pm	1:22pm	1:52pm	2:22pm	2:52pm	3:22pm	3:52pm	4:22pm	4:52pm	5:22pm	5:52pm	6:22pm
<b>16</b> Mudbrick Vineyard	11:00am	11:30am	12:00pm	12:30pm	1:00pm	1:30pm	2:00pm	2:30pm	3:00pm	3:30pm	4:00pm	4:30pm	5:00pm	5:30pm	6:00pm	6:30pm
<b>17</b> Cable Bay Vineyard	11:05am	11:35am	12:05pm	12:35pm	1:05pm	1:35pm	2:05pm	2:35pm	3:05pm	3:35pm	4:05pm	4:35pm	5:05pm	5:35pm	6:05pm	6:35pm
Matiatia Ferry Terminal arrival	11:10am	11:40am	12:10pm	12:40pm	1:10pm	1:40pm	2:10pm	2:40pm	3:10pm	3:40pm	4:10pm	4:40pm	5:10pm	5:40pm	6:10pm	6:40pm
Ferry to Auckland departs	11:30am	12:00pm	12:30pm	1:00pm	1:30pm	2:00pm	2:30pm	3:00pm	3:30pm	4:00pm	4:30pm	5:00pm	5:30pm	6:00pm	6:30pm	7:00pm

Hop-On Hop-Off Explorer Bus routes and times may vary due to weather conditions. Timetable indicates the time bus will depart from the bus stop. Vineyard opening and closing times may change on public holidays or for private event bookings.